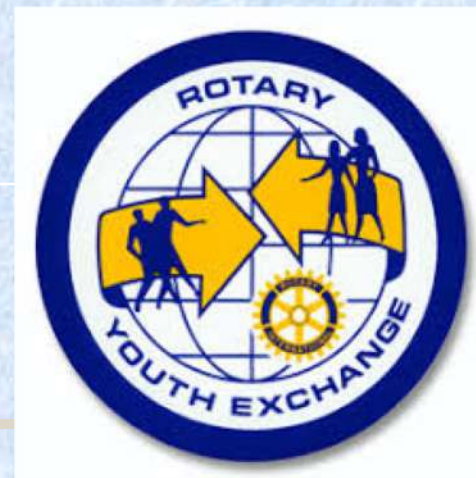




District 2160

YEP = Youth Exchange Program





Planning

09h00	Accueil des parents
09h30 – 10h30	Présentation (part 1) et témoignage d'Anaïs
10:30 – 10:45	Pause
10:45 – 12:00	Présentation (part 2)
12:00 – 15:00	Apéro dans le restaurant (13h00 repas des parents)

Agenda



Objectifs du programme

Les intervenants

Les règles

L'argent

Assurance

Problèmes sur place

Visa et Vol

Le départ

YEP - Objectifs du Programme



Découvrir

- Une autre partie du monde
- Une autre culture

Accepter

- D'autres valeurs et habitudes
- Une rigueur administrative
- Un règlement

Grandir

- Découvrir ses points forts
- Gagner en autonomie

Etre l'ambassadeur de son Pays

LEITMOTIV
ADAPT YOURSELF

Favoriser la compréhension, l'entente et la paix entre les peuples

LES ÉTUDIANTS YEP



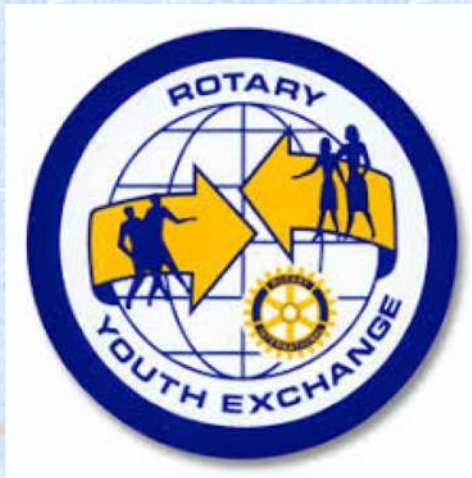
- Terminologie : **YEP / Inbound / Outbound / Rebound**
- Étudiants sont accueillis dans un District
- Le nombre dans 1 District peut varier de 3 à 95



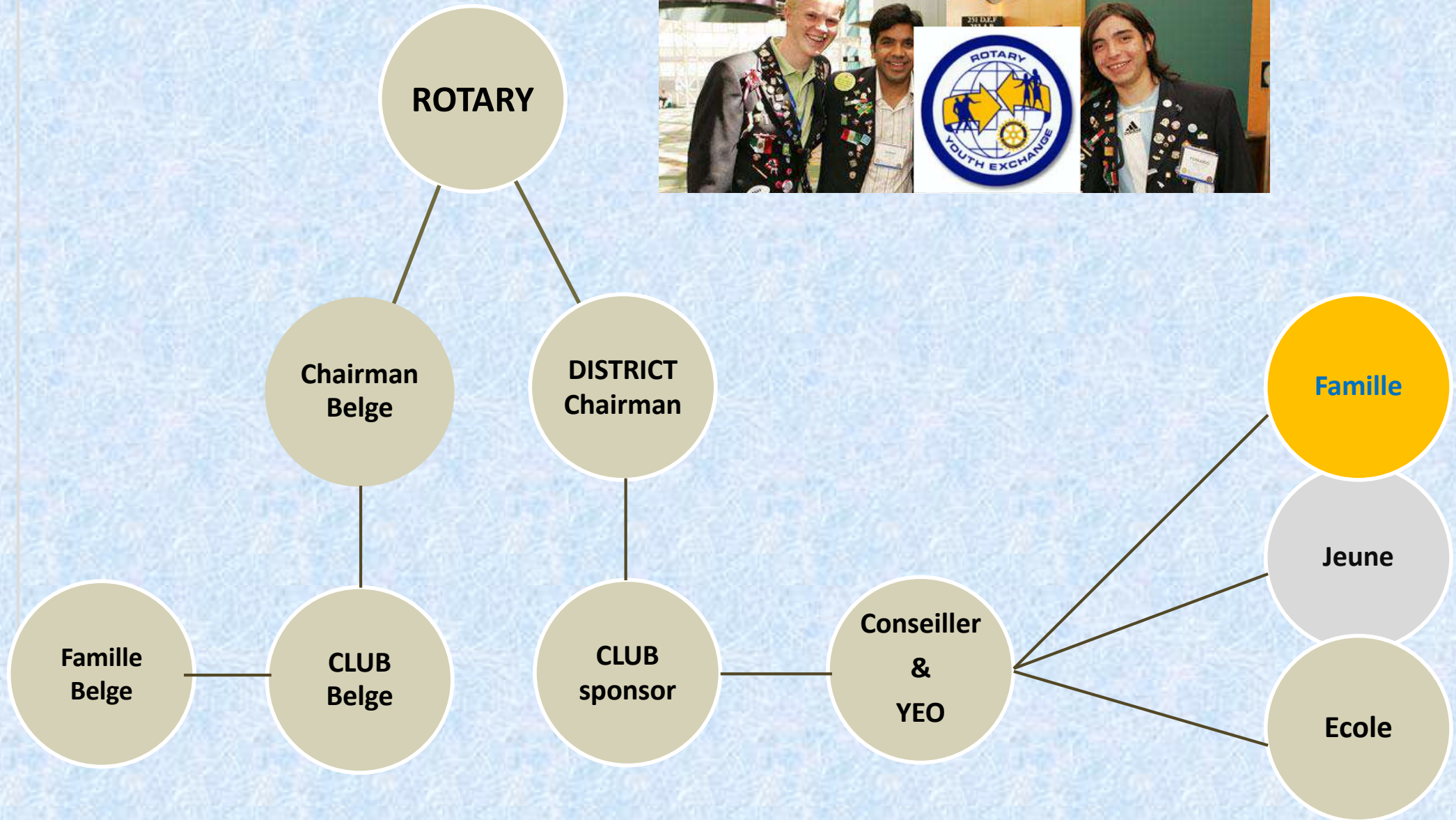


District 2160 – Youth Exchange Program

Les acteurs



Les acteurs



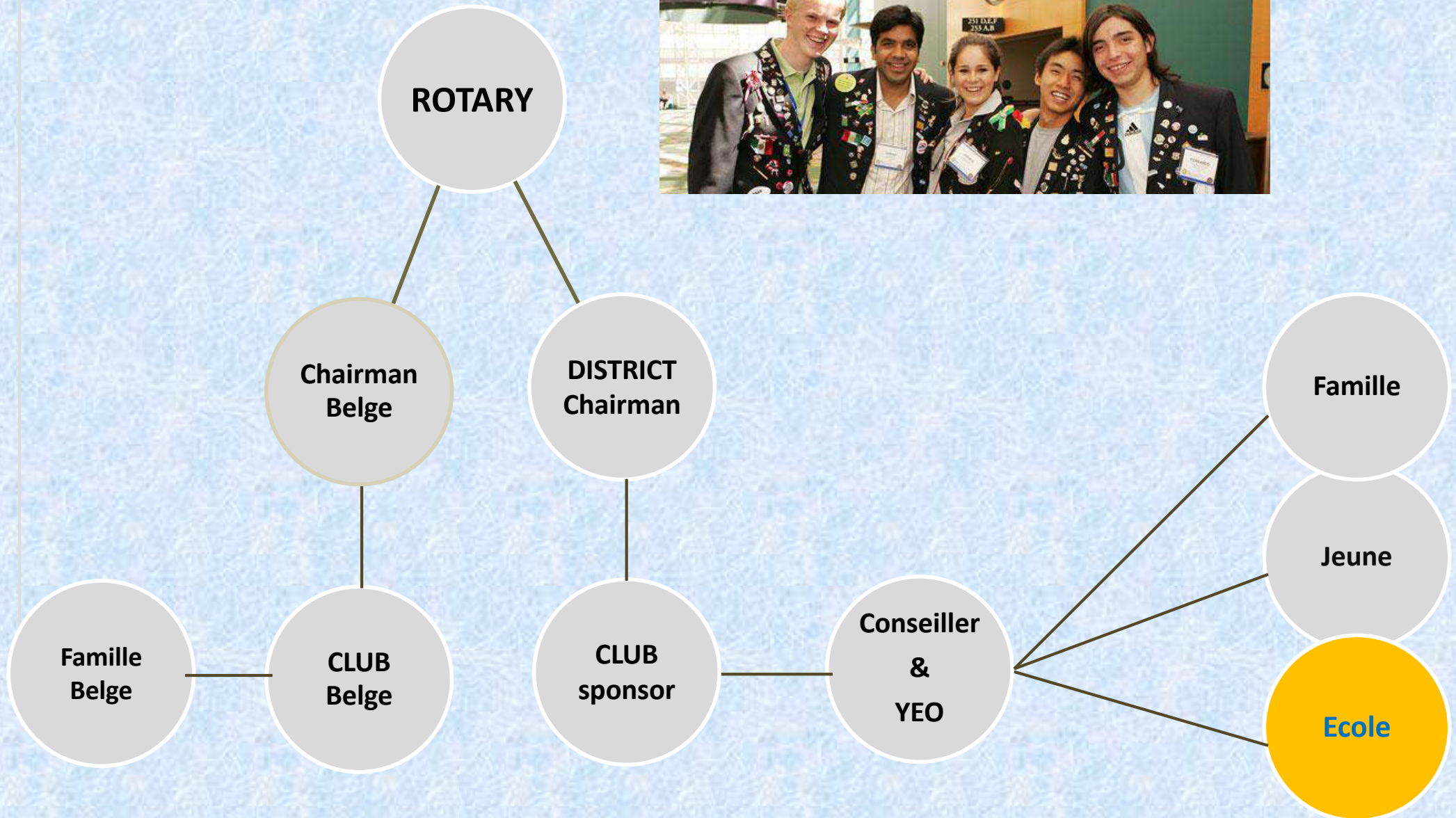
LA FAMILLE (hôte)



- N'est pas un hôtel
- est bénévole
- A des occupations et ses habitudes (**Adapt Yourself**)
(et pourrait ne pas pouvoir t'aider dans tes souhaits de déplacements)
- L'Inbound doit s'impliquer dans la vie de la famille
 - Ne pas passer pas sa vie dans sa chambre ou sur son PC / Netflix / Smartphone/ la Belgique
 - Saisir toutes les opportunités que ta famille lui offre
 - Ranger sa chambre
 - Aider à faire la lessive
 - Pouvoir préparer des repas (belges);
 -
- Pour contacter sa famille en Belgique, il préférera skype, whatsapp...



Les acteurs





- Programme local (différent de Belgique)
- Frais scolaires => soit la famille d'accueil
 => soit le Rotary Club local
- Uniforme => soit à votre charge,
 => soit à charge de la famille
 => soit le Club Rotary

Obligation de suivre les cours et passer (tous) les examens

Universités et Hautes Ecoles



- Uniquement dans certains pays (à vérifier) mais aucune garantie

UNIVERSITY >

- Sur proposition du district hôte et des familles d'accueil



- Programme libre et au choix
- Obligation de passer des examens



SUR PLACE

- Compléter les documents nécessaires et **RENOYER** les au plus vite en Belgique pour rester en ordre avec les allocations familiales
- **PARTICIPATION OBLIGATOIRE** aux cours afin de pouvoir obtenir une ou les **ATTESTATION(S)** du Chairman (de l'école) nécessaire(s) à la poursuite de vos études supérieures



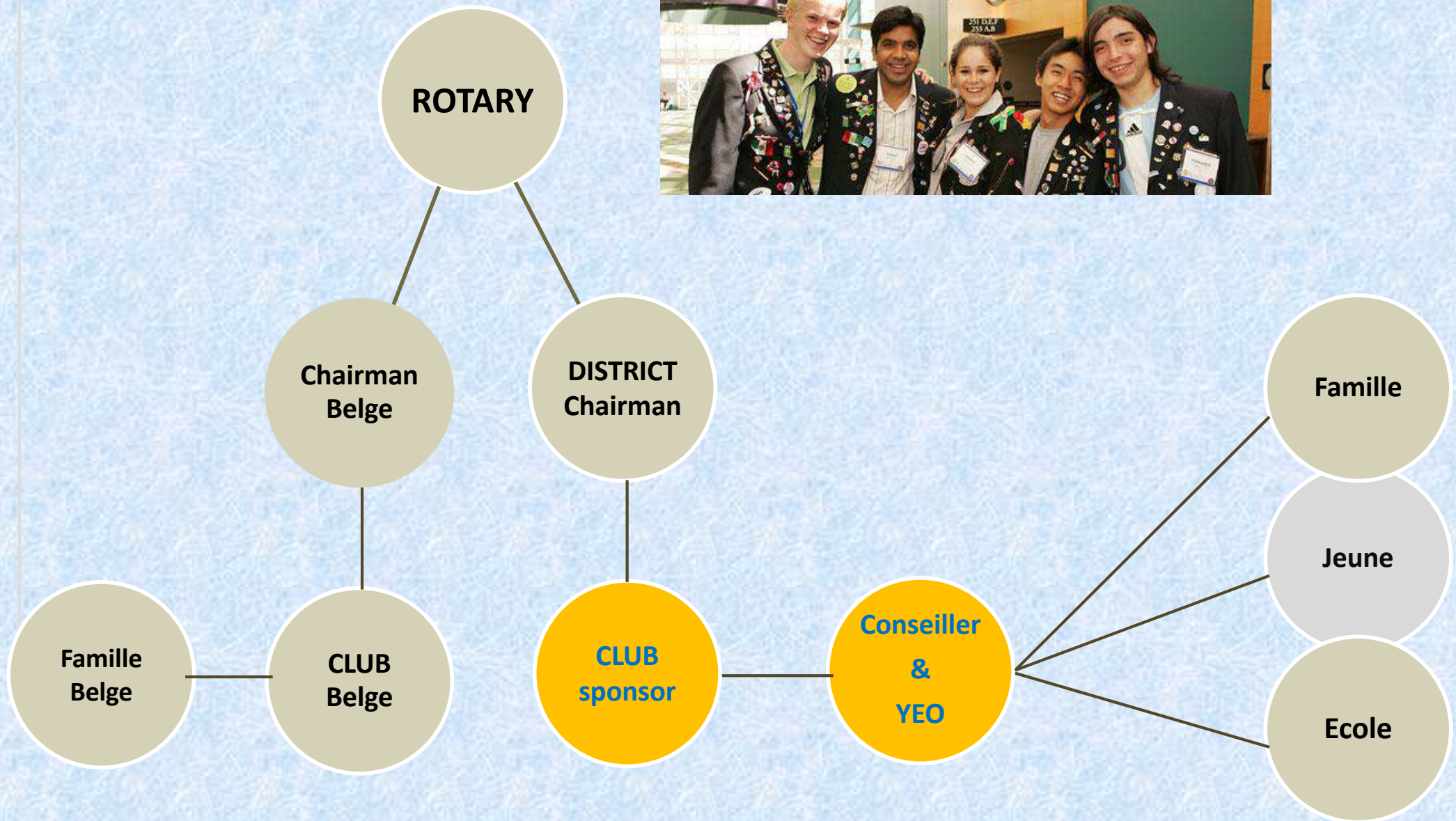


Excellent moyen d'intégration

- Possibilités de participer à des activités sportives organisées par l'école
- Frais pris en charge par l'étudiant, la famille, le Rotary local, ou ... à voir sur place
- Sports moteurs et extrêmes ne sont pas couverts par l'assurance du Rotary

Si incertitude, vérifiez votre contrat d'assurance

Les acteurs



Le club hôte



- Gère l'accueil de l'étudiant

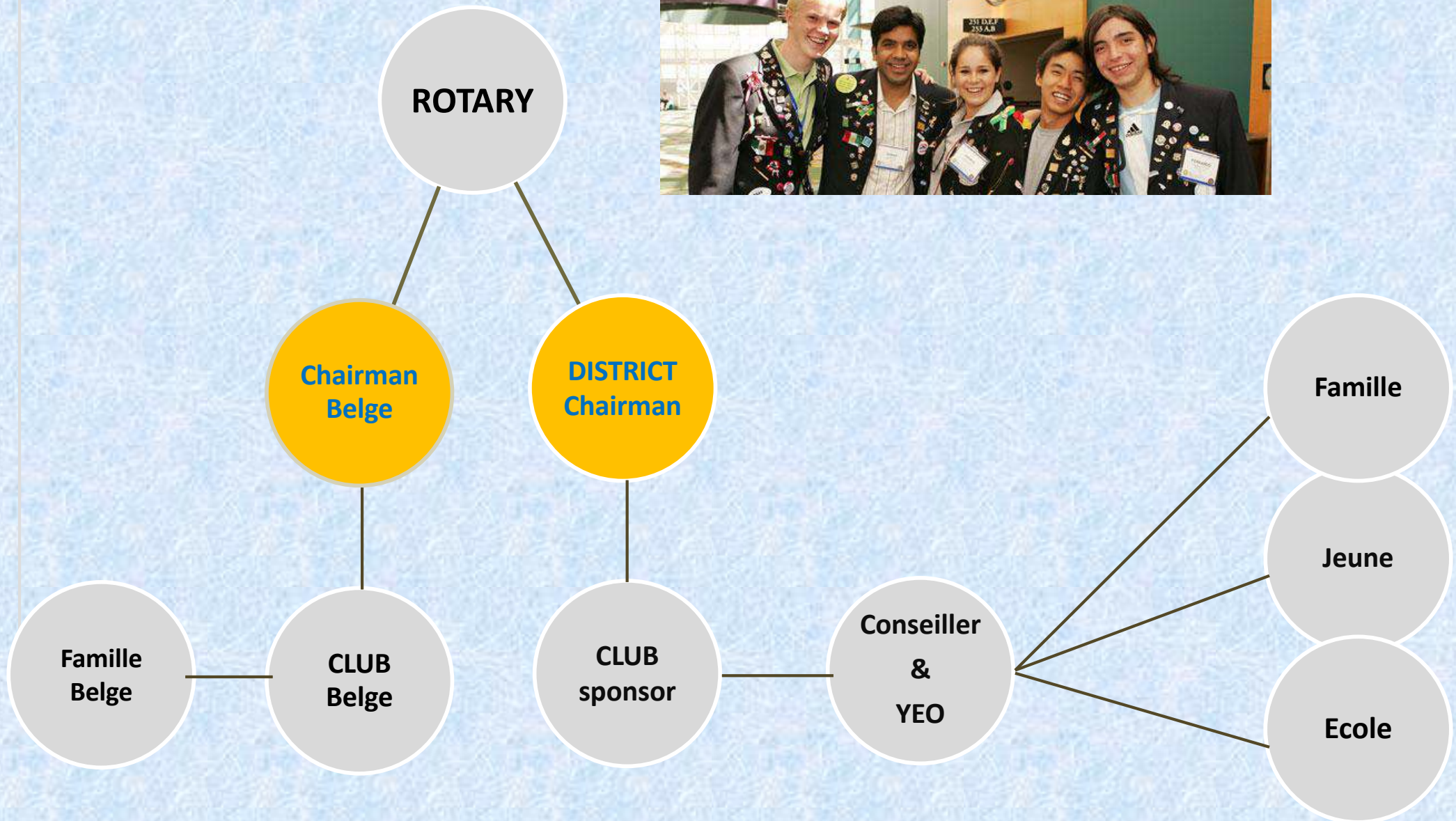


- Certifie la/les familles d'accueil



- Attribue un parrain ou une marraine à l'étudiant(e) - Conseiller

Les acteurs



Le Chairman



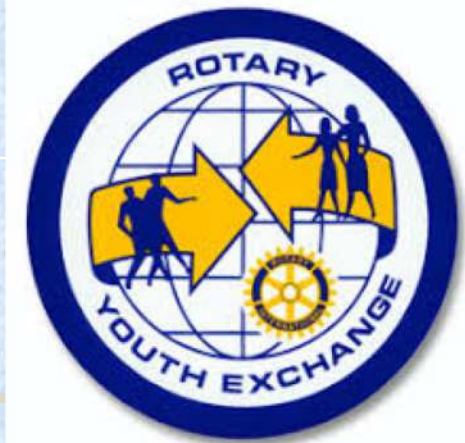
- Responsable des échanges
- Certifie les clubs accueillants des jeunes
- Chapeaute les YEO des différents clubs
- Doit être informé à tout moment de tout ce qui se passe avec les étudiants d'échange
- Approuve les demandes d'autorisation (voyages, visites des parents naturels, ...)
- Toujours accessible (mail & Tel)



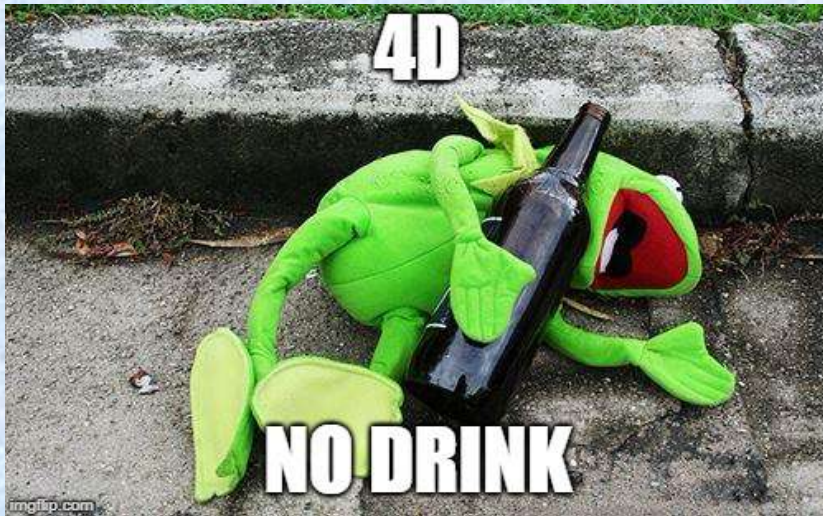


District 2160 – Youth exchange Program

Les règles



Règles des "4 D"



Le non respect des règles entraine le **retour immédiat**

Règles signées par tous les jeunes et familles



Rotary District _____

Applicant Name _____

Rotary Youth Exchange – Long-Term Exchange Program Section G: Rules and Conditions of Exchange

As a Youth Exchange student sponsored by a Rotary club or district, you must agree to the following rules and conditions of exchange. Violation of any of these rules may result in dismissal from the program and immediate return home, at student's expense. Please note that districts may add this document or insert additional rules if needed to account for local conditions.

Rules and Conditions of Exchange

- You must obey the laws of the host country. If found guilty of violating any law, you can expect no assistance from your sponsors or native country. You must return home at your own expense as soon as released by authorities.
- You will be under the host district's authority while you are an exchange student and must abide by the rules and conditions of exchange provided by the host district. Parents or legal guardians must not authorize any extra activities directly to you. Any relatives you may have in the host country will have to adhere to you while you are in the program.
- You are not allowed to possess or use illegal drugs. Legal medications that are prescribed to you by a physician are allowed.
- The illegal drinking of alcoholic beverages is especially forbidden. Students who are of legal age should refrain. If your host family offers you an alcoholic drink, it is permissible to accept it under their supervision in the home. Excessive consumption and drunkenness is forbidden.
- You may not operate a motorized vehicle, including but not limited to cars, trucks, motorcycles, aircraft, all-terrain vehicles, snowmobiles, boats, and other watercraft, or participate in driver education programs.
- Smoking is discouraged. If you state in your application that you do not smoke, you will be held to that position throughout your exchange. Your acceptance and host family placement is based on your signed statement. Under no circumstances are you to smoke in your host family's bedrooms.
- Body piercing or obtaining a tattoo while on your exchange, without the express written permission of your natural parents, host parents, host club, and host district, is prohibited for health reasons.
- You must make every effort to learn the language of the host country, and may be responsible for any costs for tutoring, language camps, or other instructions.
- Limit your use of the Internet and mobile phones, as directed by your host district, host club, and host family. Excessive or inappropriate use is not acceptable. Accessing or downloading pornographic material is especially forbidden.
- You must attend school regularly and make an honest attempt to succeed.
- You must have health and accident or travel insurance that provides coverage for accidental injury and illness, death benefits (including repatriation of remains), disability/dismemberment benefits, emergency medical evacuation, emergency evacuation expenses, 24-hour emergency assistance services, and legal services, in amounts satisfactory to the host Rotary club or district in consultation with the sponsor Rotary club or district, with coverage from the time of your departure from your home country until your return.
- You must also have liability coverage through a travel insurance or other applicable policy, in amounts satisfactory to the host Rotary club or district in consultation with the sponsor Rotary club or district.
- You must have sufficient financial support to assure your well-being during your exchange. Your host district may require a contingency fund for emergency situations. Unused funds will be returned to you or to your parents or legal guardians at the end of your exchange.
- You must follow the travel rules of your host district. Travel is permitted with host parents or for Rotary club or district functions authorized by the host Rotary club or district with proper adult chaperones. The host district and club, host family, and your parents or legal guardians must approve any other travel in writing, thus ensuring Rotary of responsibility and liability.
- You must return home directly by a route mutually agreeable to your host district and your parents or legal guardians.
- Jay costs related to an early return home or any other unusual costs (language tutoring, tours, etc.) are the responsibility of you and your parents or legal guardians.
- Visits by your parents or legal guardians, siblings, or friends while you are on exchange may only take place with the host club's and district's consent and within their guidelines. Typically, visits may be arranged only in the last quarter of the exchange or during school breaks and are not allowed during major holidays.
- Sexual romantic activity is to be avoided. Sexual activity is forbidden.
- Talk with your host club counselor, host parents, or other trusted adult if you encounter any form of abuse or harassment.

Recommendations for a Successful Exchange

- You should communicate with your first host family prior to leaving your home country. The family's information will be provided to you by your host club or district prior to your departure.
- Respect your host's wishes. Become an integral part of the host family, assuming duties and responsibilities normal for a student of your age or for children in the family.
- Learn ahead of time as much of the language of your host country as possible, and use the language regularly. Teachers, host parents, Rotary club members, and others you meet in the community will appreciate the effort. It will go a long way in your gaining acceptance in the community and with those who will become lifelong friends.
- Attend Rotary-sponsored events and host family events, and show an interest in these activities. Volunteer if you are involved; do not want to be asked. Lack of interest on your part is detrimental to your exchange and can have a negative impact on future exchanges.
- Get involved in your school and community activities. Plan your recreation and spare-time activities around your school and community friends. Don't spend all your time with other exchange students. If there is a local Internet club, you are encouraged to join it.
- Choose friends in the community carefully. Ask for and lend the advice of host families, counselors, and school personnel in choosing friends.
- Do not borrow money. Pay any bills promptly. Ask permission to use the family phone or computer, keep track of all costs and time on the Internet, and reimburse your host family each month for the costs you incur.
- If you are offered an opportunity to go on a trip or attend an event, make sure you understand any costs you must pay and your responsibilities before you go.

Applicant Name _____

DECLARATION

IN CONSIDERATION of the acceptance and participation of the applicant in this program, the undersigned APPLICANT and his/her PARENTS or LEGAL GUARDIANS, to the full extent permitted by law, hereby release and agree to defend, hold harmless, and indemnify all host parents and members of their families, and all members, officers, directors, committee members, and employees of the host and sponsor Rotary clubs and districts, and of Rotary International, from any or all liability for any loss, property damage, personal injury, or death, including any such liability that may arise out of any negligent act or omission, excepting gross negligence or intentional conduct, of any such persons or entities, which may be suffered or claimed by such applicant, parent, or guardian during, or as a result of, the participation by the applicant in such Youth Exchange program, including travel to and from the host country.

As the undersigned applicant and undersigned parents or legal guardians of the applicant, we hereby state that we have read and understood the Program Rules and Conditions of Exchange. Should I, as a student, be selected for an exchange, I agree to abide by these rules and others imposed on me with due notice during my time as an exchange student in the host country.

We attest that we have read and understand the Statement of Conduct for Working with Youth. We understand that all Rotarians and host families are expected to have read and understand this statement as well. I understand that, if selected for an exchange, I will be provided with training and written material on abuse and harassment and that this information will include the contact information of the person I should contact if I encounter any form of abuse or harassment.

The undersigned applicant attests that I am of good health and character, understand the importance of the role of a youth ambassador as a Rotary Youth Exchange student, and will, to the best of my ability, maintain the high standards required of a Rotary Youth Exchange student should I be chosen to represent my sponsor Rotary club and district, school, community, state/province, and country. I further state that all the material contained in this application and the attached documents are true and accurate to the best of my knowledge.

Applicant (print name)	Signature (in blue ink)
Mother/Legal Guardian (print name)	Signature (in blue ink)
Father/Legal Guardian (print name)	Signature (in blue ink)
Witnessed in the presence of Sponsor Club/District Representative (print name and title)	Signature (in blue ink)
Dated this _____ Day of _____ Month, _____ Year.	

Alternative Emergency Contact in home country, OTHER THAN A PARENT/GUARDIAN

Name	Relationship		
Home Address – Street			
City	State/Province	Postal Code	Country
E-mail Address	Home Phone Number	Business Phone Number	Mobile Phone Number

Statement of Conduct for Working with Youth

Rotary International strives to create and maintain a safe environment for all youth who participate in Rotary activities. Rotarians, Rotarians' spouses, partners, and other volunteers must safeguard the children and young people they come in contact with and protect them from physical, sexual and emotional abuse.

Adopted by the Rotary International Board of Directors, November 2006

Rotary District _____ Applicant Name _____

Rotary Youth Exchange – Long-Term Exchange Program
Section G: Rules and Conditions of Exchange

As a Youth Exchange student sponsored by a Rotary club or district, you must agree to the following rules and conditions of exchange. Violation of any of these rules may result in dismissal from the program and immediate return home, at student's expense. Please note that districts may edit this document or insert additional rules if needed to account for local conditions.

Rules and Conditions of Exchange

- 1) You must obey the laws of the host country. If found guilty of violating any law, you can expect no assistance from your sponsors or native country. You must return home at your own expense as soon as released by authorities.
- 2) You will be under the host district's authority while you are an exchange student and must abide by the rules and conditions of exchange provided by the host district. Parents or legal guardians must not authorize any extra activities directly to you. Any relatives you may have in the host country will have no authority over you while you are in the program.
- 3) You are not allowed to possess or use illegal drugs. Legal medications that are prescribed to you by a physician are allowed.
- 4) The ingestion of alcoholic beverages is expressly prohibited. Students who are of legal age should refrain. If your host family offers you an alcoholic drink, it is permissible to accept it under their supervision in the home. Excessive consumption and drunkenness is prohibited.
- 5) You may not operate a motorized vehicle, including but not limited to cars, trucks, motorcycles, aircraft, all-terrain vehicles, snowmobiles, boats, and other watercraft, or participate in driver education programs.
- 6) Smoking is discouraged. If you state in your application that you do not smoke, you will be held to that position throughout your exchange. Your acceptance of host family placement is based on your signed statement. Under no circumstances are you to smoke in your host family's bedrooms.
- 7) Body piercing or obtaining a tattoo while on your exchange, without the express written permission of your natural parents, host parents, host club, and host district, is prohibited, for health reasons.
- 8) You must make every effort to learn the language of the host country, and may be responsible for any costs of tutoring, language camps, or other instruction.
- 9) Limit your use of the Internet and mobile phones, as directed by your host district, host club, and host family. Excessive or inappropriate use is not acceptable. Accessing or downloading pornographic material is expressly forbidden.
- 10) You must attend school regularly and make an honest attempt to succeed.
- 11) You must have health and accident or travel insurance that provides coverage for accidental injury and illness, death benefits (including repatriation of remains), disability/dismemberment benefits, emergency medical evacuation, emergency visitation expenses, 24-hour emergency assistance services, and legal services, in amounts satisfactory to the host Rotary club or district in consultation with the sponsor Rotary club or district, with coverage from the time of your departure from your home country until your return.
- 12) You must also have liability coverage through a travel insurance or other applicable policy, in amounts satisfactory to the host Rotary club or district in consultation with the sponsor Rotary club or district.
- 13) You must have sufficient financial support to assure your well-being during your exchange. Your host district may require a contingency fund for emergency expenses. Unspent funds will be returned to you or to your parents or legal guardians at the end of your exchange.
- 14) You must follow the travel rules of your host district. Travel is permitted with host parents or for Rotary club or district functions authorized by the host Rotary club or district with assigned adult chaperones. The host district and club, host family, and your parents or legal guardians must approve any other travel in writing, thus exempting Rotary of responsibility and liability.
- 15) You must return home directly by a route mutually agreeable to your host district and your parents or legal guardians.
- 16) Any costs related to an early return home or any other unusual costs (language tutoring, tours, etc.) are the responsibility of you and your parents or legal guardians.
- 17) Visits by your parents or legal guardians, siblings, or friends while you are on exchange may only take place with the host club's and district's consent and within their guidelines. Typically, visits may be arranged only in the last quarter of the exchange or during school breaks and are not allowed during major holidays.
- 18) Serious romantic activity is to be avoided. Sexual activity is forbidden.
- 19) Talk with your host club counselor, host parents, or other trusted adult if you encounter any form of abuse or harassment.

Recommendations for a Successful Exchange

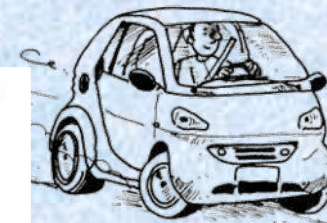
- 1) You should communicate with your first host family prior to leaving your home country. The family's information will be provided to you by your host club or district prior to your departure.
- 2) Respect your host's wishes. Become an integral part of the host family, assuming duties and responsibilities normally reserved for a student of your age or for children in the family.
- 3) Learn ahead of time as much of the language of your host country as possible, and use the language regularly. Teachers, host parents, Rotary club members, and others you meet in the community will appreciate the effort. It will go a long way in your gaining acceptance in the community and with those who will become lifelong friends.
- 4) Attend Rotary-sponsored events and host family events, and show interest in these activities. Volunteer to be involved; do not just be asked. Lack of interest on your part is detrimental to your exchange and can have a negative impact on future exchanges.
- 5) Get involved in your school and community activities. Plan your recreation and spare-time activities around your school and community friends. Don't spend all your time with other exchange students. If there is a local Internet club, you are encouraged to join it.
- 6) Choose friends in the community carefully. Ask for and heed the advice of host families, counselors, and school personnel in choosing friends.

Rotary Youth Exchange Program: Rules and Conditions of Exchange



NO DRUGS

3) You are not allowed to possess or use illegal drugs. Legal medications that are prescribed to you by a physician are allowed.



NO DRIVING

5) You may not operate a motorized vehicle, including but not limited to cars, trucks, motorcycles, aircraft, all-terrain vehicles, snowmobiles, boats, and other watercraft, or participate in driver education programs.



Rotary District _____ Applicant Name _____
Rotary Youth Exchange – Long-Term Exchange Program
Section G: Rules and Conditions of Exchange

As a Youth Exchange student sponsored by a Rotary club or district, you must agree to the following rules and conditions of exchange. Violation of any of these rules may result in your dismissal from the program and immediate return home, at student's expense. Please note that districts may edit this document or insert additional rules if needed to account for local conditions.

Rules and Conditions of Exchange

- 1) You must obey the laws of the host country. If found guilty of violating any law, you can expect no assistance from your sponsors or native country. You must return home at your own expense as soon as released by authorities.
- 2) You will be under the host district's authority while you are an exchange student and must abide by the rules and conditions of exchange provided by the host district. Parents or legal guardians must not authorize any extra activities directly to you. Any relatives you may have in the host country will have no authority over you while you are in the program.
- 3) You are not allowed to possess or use illegal drugs. Legal medications
- 4) **The illegal drinking of alcoholic beverages is expressly forbidden. Students who are of legal age should refrain. If your host family offers you an alcoholic drink, it is permissible to accept it under their supervision in the home. Excessive consumption and drunkenness is forbidden.**
- 5) **You may not operate a motorized vehicle, including but not limited to cars, trucks, motorcycles, scooters, mopeds, ATVs, snowmobiles, boats, and other watercraft, or participate in driver education programs.**
- 6) Smoking is discouraged. If you state in your application that you do not smoke, you will be held to that position throughout your exchange. Your acceptance and host family placement is based on your signed statement. Under no circumstances are you to smoke in your host family's bedrooms.
- 7) Body piercing or obtaining a tattoo while on your exchange, without the express written permission of your natural parents, host parents, host club, and host district, is prohibited, for health reasons.
- 8) You must make every effort to learn the language of the host country, and may be responsible for any costs for tutoring, language camps, or other instruction.
- 9) Limit your use of the Internet and mobile phones, as directed by your host district, host club, and host family. Excessive or inappropriate use is not acceptable. Accessing or downloading pornographic material is expressly forbidden.
- 10) You must attend school regularly and make an honest attempt to succeed.
- 11) You must have health and accident or travel insurance that provides coverage for accidental injury and illness, death benefits (including repatriation of remains), disability/dismemberment benefits, emergency medical evacuation, emergency visitation expenses, 24-hour emergency assistance services, and legal services, in amounts satisfactory to the host Rotary club or district in consultation with the sponsor Rotary club or district, with coverage from the time of your departure from your home country until your return.
- 12) You must also have liability coverage through a travel insurance or other applicable policy, in amounts satisfactory to the host Rotary club or district in consultation with the sponsor Rotary club or district.
- 13) You must have sufficient financial support to assure your well-being during your exchange. Your host district may require a contingency fund for emergency situations. Unused funds will be returned to you or your parents or legal guardians at the end of your exchange.
- 14) You must follow the travel rules of your host district. Travel is permitted with District Officers or for Rotary club or district functions authorized by the host Rotary club or district with proper adult chaperones. The host district and your host family, and your parents or legal guardians must approve any other travel. In writing, thus exempting Rotary of responsibility and liability.
- 15) You must return home directly by a route mutually agreed to by your host district and your parents or legal guardians.
- 16) Any costs related to an early return home or any other unusual costs (language tutoring, tours, etc.) are the responsibility of you and your parents or legal guardians.
- 17) Visits by your parents or legal guardians, siblings, or friends while you are on exchange may only take place with the host club's and district's consent and within their guidelines. Typically, visits may be arranged only in the last quarter of the exchange or during school breaks and are not allowed during major holidays.
- 18) Serious romantic activity is to be avoided. Sexual activity is forbidden.
- 19) Talk with your host club counselor, host parents, or other trusted adult if you encounter any form of abuse or harassment.

Recommendations for a Successful Exchange

- 1) You should communicate with your first host family prior to leaving your home country. The family's information will be provided to you by your host club or district prior to your departure.
- 2) Respect your host's wishes. Become an integral part of the host family, assuming duties and responsibilities normal for a student of your age or for children in the family.
- 3) Learn ahead of time as much of the language of your host country as possible, and use the language regularly. Teachers, host parents, Rotary club members, and others you meet in the community will appreciate the effort. It will go a long way in your gaining acceptance in the community and with those who will become lifelong friends.
- 4) Attend Rotary-sponsored events and host family events, and show an interest in these activities. Volunteer to be involved, do not wait to be asked. Lack of interest on your part is detrimental to your exchange and can have a negative impact on future exchanges.
- 5) Get involved in your school and community activities. Plan your recreation and spare-time activities around your school and community friends. Don't spend all your time with other exchange students. If there is a local internet club, you are encouraged to join it.
- 6) Choose friends in the community carefully. Ask for and heed the advice of host families, counselors, and school personnel in choosing friends.
- 7) Do not borrow money. Pay any bills promptly. Ask permission to use the family phone or computer. Keep track of all calls and time on the Internet, and reimburse your host family each month for the costs you incur.
- 8) If you are offered an opportunity to go on a trip or attend an event, make sure you understand any costs you must pay and your responsibilities before you go.

NO DRINK

4) **The illegal drinking of alcoholic beverages is expressly forbidden. Students who are of legal age should refrain. If your host family offers you an alcoholic drink, it is permissible to accept it under their supervision in the home. Excessive consumption and drunkenness is forbidden.**



Rotary District _____

Applicant Name _____

Rotary Youth Exchange – Long-Term Exchange Program

Section G: Rules and Conditions of Exchange

As a Youth Exchange student sponsored by a Rotary club or district, you must agree to the following rules and conditions of exchange. Violation of any of these rules may result in dismissal from the program and immediate return home, at student's expense. Please note that districts may edit this document or insert additional rules if needed to account for local conditions.

Rules and Conditions of Exchange

- 1) You must obey the laws of the host country. If found guilty of violating any law, you can expect no assistance from your sponsors or native country. You must return home at your own expense as soon as released by authorities.
- 2) You will be under the host district's authority while you are an exchange student and must abide by the rules and conditions of exchange provided by the host district. Parents or legal guardians must not authorize any extra activities directly to you. Any relatives you may have in the host country will have no authority over you while you are in the program.
- 3) You are not allowed to possess or use illegal drugs. Legal medications that are prescribed to you by a physician are allowed.
- 4) The illegal drinking of alcoholic beverages is expressly forbidden. Students who are of legal age should refrain. If your host family offers you an alcoholic drink, it is permissible to accept it under their supervision in the home. Excessive consumption and drunkenness is forbidden.
- 5) You may not operate a motorized vehicle, including but not limited to cars, trucks, motorcycles, aircraft, all-terrain vehicles, snowmobiles, boats, and other watercraft, or participate in driver education programs.
- 6) Smoking is discouraged. If you state in your application that you do not smoke, you will be held to that position throughout your exchange. Your acceptance and host family placement is based on your signed statement. Under no circumstances are you to smoke in your host family's bedrooms.
- 7) Body piercing or obtaining a tattoo while on your exchange, without the express written permission of your natural parents, host parents, host club, and host district, is prohibited, for health reasons.
- 8) You must make every effort to learn the language of the host country, and may be responsible for any costs for tutoring, language camps, or other instruction.
- 9) Limit your use of the Internet and mobile phones, as directed by your host district, host club, and host family. Excessive or inappropriate use is not acceptable. Accessing or downloading pornographic material is expressly forbidden.
- 10) You must attend school regularly and make an honest attempt to succeed.
- 11) You must have health and accident or travel insurance that provides coverage for accidental injury and illness, death benefits (including repatriation of remains), disability/dismemberment benefits, emergency medical evacuation, emergency visitation expenses, 24-hour emergency assistance services, and legal services, in amounts satisfactory to the host Rotary club or district in consultation with the sponsor Rotary club or district, with coverage from the time of your departure from your home country until your return.
- 12) You must also have liability coverage through a travel insurance or other applicable policy, in amounts satisfactory to the host Rotary club or district in consultation with the sponsor Rotary club or district.
- 13) You must have sufficient financial support to assure your well-being during your exchange. Your host district may require a contingency fund for emergency situations. Unused funds will be returned to you or to your parents or legal guardians at the end of your exchange.
- 14) You must follow the travel rules of your host district. Travel is permitted with host parents or for Rotary club or district functions authorized by the host Rotary club or district with proper adult chaperones. The host district and club, host family, and your parents or legal guardians must approve any other travel in writing, thus exempting Rotary of responsibility and liability.
- 15) You must return home directly by a route mutually agreeable to your host district and your parents or legal guardians.
- 16) Any costs related to an early return home or any other unusual costs (language tutoring, tours, etc.) are the responsibility of you and your parents or legal guardians.
- 17) Visits by your parents or legal guardians, siblings, or friends while you are on exchange may only take place with the host club's and district's consent and within their guidelines. Typically, visits may be arranged only in the last quarter of the exchange or during school breaks and are not allowed during major holidays.
- 18) Serious romantic activity is to be avoided. Sexual activity is forbidden.
- 19) Talk with your host club counselor, host parents, or other trusted adult if you encounter any form of abuse or harassment.

Recommendations for a Successful Exchange

- 1) You should communicate with your first host family prior to leaving your home country. The family's information will be provided to you by your host club or district prior to your departure.
- 2) Respect your host's wishes. Become an integral part of the host family, assuming duties and responsibilities normal for a student of your age or for children in the family.
- 3) Learn ahead of time as much of the language of your host country as possible, and use the language regularly. Teachers, host parents, Rotary club members, and others you meet in the community will appreciate the effort. It will go a long way in your gaining acceptance in the community and with those who will become lifelong friends.
- 4) Attend Rotary-sponsored events and host family events, and show an interest in these activities. Volunteer to be involved; do not wait to be asked. Lack of interest on your part is detrimental to your exchange and can have a negative impact on future exchanges.
- 5) Get involved in your school and community activities. Plan your recreation and spare-time activities around your school and community friends. Don't spend all your time with other exchange students. If there is a local Internet club, you are encouraged to join it.
- 6) Choose friends in the community carefully. Ask for and heed the advice of host families, counselors, and school personnel in choosing friends.
- 7) Do not borrow money. Pay any bills promptly. Ask permission to use the family phone or computer. Keep track of all calls and time on the Internet, and reimburse your host family each month for the costs you incur.
- 8) If you are offered an opportunity to go on a trip or attend an event, make sure you understand any costs you must pay and your responsibilities before you go.

NO DATE

18) Serious romantic activity is to be avoided. Sexual activity is forbidden.

19) Talk with your host club counselor, host parents, or other trusted adult if you encounter any form of abuse or harassment.



Rotary District _____

Applicant Name _____

Rotary Youth Exchange – Long-Term Exchange Program Section G: Rules and Conditions of Exchange

As a Youth Exchange student sponsored by a Rotary club or district, you must agree to the following rules and conditions of exchange. Violation of any of these rules may result in dismissal from the program and immediate return home, at student's expense. Please note that districts may edit this document or insert additional rules if needed to account for local conditions.

Rules and Conditions of Exchange

- You must obey the laws of the host country. If found guilty of violating any law, you can expect no assistance from your sponsors or native country. You must return home at your own expense as soon as released by authorities.
- You will be under the host district's authority while you are an exchange student and must abide by the rules and conditions of exchange provided by the host district. Parents or legal guardians must not authorize any extra activities directly to you. Any relatives you may have in the host country will have no authority over you while you are in the program.
- You are not allowed to possess or use illegal drugs. Legal medications that are prescribed to you by a physician are allowed.
- The illegal drinking of alcoholic beverages is expressly forbidden. Students who are of legal age should refrain. If your host family offers you an alcoholic drink, it is permissible to accept it under their supervision in the home. Excessive consumption and drunkenness is forbidden.
- You may not operate a motorized vehicle, including but not limited to cars, trucks, motorcycles, aircraft, all-terrain vehicles, snowmobiles, boats, and other watercraft, or participate in driver education programs.
- Smoking is discouraged. If you state in your application that you do not smoke, you will be held to that position throughout your exchange. Your acceptance and host family placement is based on your signed statement. Under no circumstances are you to smoke in your host family's bedrooms.
- Body piercing or obtaining a tattoo while on your exchange, without the express written permission of your natural parents, host parents, host club, and host district, is prohibited, for health reasons.
- You must make every effort to learn the language of the host country, and may be responsible for any costs for tutoring, language camps, or other instructions.
- Limit your use of the Internet and mobile phones, as directed by your host district, host club, and host family. Excessive or inappropriate use is not acceptable. Accessing or downloading pornographic material is expressly forbidden.

Recommendations for a Successful Exchange

- You should communicate with your first host family prior to leaving your home country. The family's information will be provided to you by your host club or district prior to your departure.
- Respect your host's wishes. Become an integral part of the host family, assuming duties and responsibilities normal for a student of your age or for children in the family.
- Learn ahead of time as much of the language of your host country as possible, and use the language regularly. Teachers, host parents, Rotary club members, and others you meet in the community will appreciate the effort. It will go a long way in your personal acceptance in the community and with those who will become lifelong friends.
- Attend Rotary-sponsored events and host family events, and show an interest in these activities. Volunteer to be involved; do not wait to be asked. Lack of interest on your part is detrimental to your exchange and can have a negative impact on future exchanges.

Rotary Youth Exchange Program: Rules and Conditions of Exchange

Section G, Page 1 of 2

Application [Go](#) Page 10

DECLARATION

CONSIDERATION of the acceptance and participation of the applicant in program, the undersigned APPLICANT and his/her PARENTS or LEGAL GUARDIANS, to the full extent permitted by law, hereby release agree to defend, hold harmless, and indemnify all host parents and others of their families, and all members, officers, directors, committee members, and employees of the host and sponsor Rotary clubs and districts, of Rotary International, from any or all liability for any loss, property damage, personal injury, or death, including any such liability that may arise if any negligent act or omission, excepting gross negligence or intentional conduct, of any such persons or entities, which may be suffered aimed by such applicant, parent, or guardian during, or as a result of, participation by the applicant in such Youth Exchange program, including travel to and from the host country.

I, the undersigned applicant and undersigned parents or legal guardians of applicant, we hereby state that we have read and understood the Program Rules and Conditions of Exchange. Should I, as a student, be selected for an exchange, I agree to abide by these rules and others imposed on me with due diligence during my time as an exchange student in the host country.

I attest that we have read and understand the Statement of Conduct for Exchange with Youth. We understand that all Rotarians and host families are expected to have read and understand this statement as well. I understand if selected for an exchange, I will be provided with training and written material on abuse and harassment and that this information will include the actual information of the person I should contact if I encounter any form of abuse or harassment.

Undersigned applicant attests that I am of good health and character, understand the importance of the role of a youth ambassador as a Rotary Youth Exchange student, and will, to the best of my ability, maintain the standards required of a Rotary Youth Exchange student should I be selected to represent my sponsor Rotary club and district, school, community, province, and country. I further state that all the material contained in application and the attached documents are true and accurate to the best of my knowledge.

Parent (print name)	Signature (in blue ink)
Legal Guardian (print name)	Signature (in blue ink)
Legal Guardian (print name)	Signature (in blue ink)

PERMISSION FOR MEDICAL CARE AND RELEASE OF MEDICAL RECORDS AND LIABILITY

We, the parents/legal guardians of the applicant, and I, the applicant, HEREBY AUTHORIZE the release of medical information on application pages "Section C: Medical History and Examination," acquired in the course of the examinations by the physician and the dentist.

We, the parents/legal guardians of the applicant, and the applicant, if of legal age, who have the sole and legal right to make the decisions on the health and care of the applicant, do release from liability and grant permission as noted of the following while our son/daughter/ward is overseas as a Rotary Youth Exchange student:

- In the event of accident or sickness, we/I authorize any Rotarian, authorized chaperones of Rotary activities, and/or host parent(s) of student to select the appropriate medical facility and physician(s)/dentist(s) to provide treatment.
- We/I give permission for any operation, administration of anesthetic, or blood transfusion that a medical practitioner may deem necessary or advisable for the treatment of our son/daughter/ward.
- We/I further consent to any medical or surgical treatment by a licensed physician, surgeon, or dentist that might be required by our son/daughter/ward for any emergency situation. We do request that we be notified as soon as possible, but emergency treatment need not be delayed to provide such notice.
- Permission is granted for immunizations required for school registration.
- In the case of elective surgery, we/I request that we/I be notified and our permission obtained before such arrangements are made.

We agree to hold harmless Rotary International, any Rotary district, Rotary club, Rotarian, Rotary chaperone, or host family for any intervention in an emergency situation regardless of final outcome.

We agree to assume all financial obligations beyond those covered by insurance for any medical treatment rendered.

14) You must follow the travel rules of your host district. Travel is permitted with host parents or for Rotary club or district functions authorized by the host Rotary club or district with proper adult chaperones. The host district and club, host family, and your parents or legal guardians must approve any other travel in writing, thus exempting Rotary of responsibility and liability.

14) You must follow the travel rules of your host district. Travel is permitted with host parents or for Rotary club or district functions authorized by the host Rotary club or district with proper adult chaperones. The host district and club, host family, and your parents or legal guardians must approve any other travel in writing, thus exempting Rotary of responsibility and liability.

Rotary International strives to create and maintain a safe environment for all youth who participate in Rotary activities. Rotarians, Rotarians' spouses, and other volunteers must safeguard the children and young people they come in contact with and protect them from physical, sexual and social abuse.

Adapted by the Rotary International Board of Directors, November 2006



- OUI MAIS...
 - PENDANT LES CONGÉS SCOLAIRES
 - AVEC AUTORISATION
- Visite parents pas toujours autorisées ou sous conditions.
- Varie d'un District à l'autre
- Dans le district : oui
- En dehors du district =
 - **Accompagné** par adulte (> 25 ans)
 - **Accord** parents, famille, Rotray Club, chairman, chairman belge
 - **Respect** des règles locales

SI NON RESPECT DES RÈGLES = RETOUR EN BELGIQUE



Si autorisée par District hôte,

- Uniquement des parents et/ou frères et sœurs
- En dehors des périodes scolaires
- Avec l'accord de la famille d'accueil, du YEO du club hôte et du Chairman du District

Pas d'obligation des familles d'accueil de recevoir ou de loger les visiteurs



- RESPECT DES TRADITIONS LOCALES
- RESPECT DES LOIS LOCALES
- RESPECT DES RÈGLES LOCALES
- RESPECT DE L'AUTRE

TOLÉRANCE ET DÉCOUVERTE

LES RÈGLES



CONTRACT SIGNÉ = ENGAGEMENT DE VOTRE PART

SI NON-RESPECT = RETOUR

Autres Règles



NO PORNO
DOWNLOAD



NO PIERCING
TATOOS

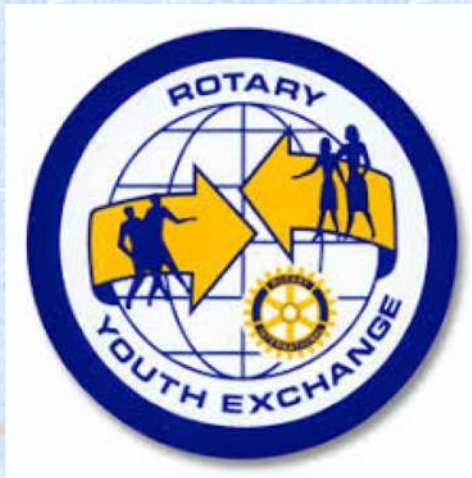


Le non respect de la loi entraine le retour immédiat



District 2160 – Youth Exchange Program

L'argent



Argent – Frais de dossier (Payé au District)



- **Outbound**

- Organiser la sélection des jeunes
- Information parents
- Interviews en janvier
- 2 week-ends d'orientation
- Kit Outbound (veste, sac à dos,)

- **Inbound**

- L'envoi des dossiers papier pour visa
- Organisation des mercredis après-midi (visites, bus, ...)
- Organisation des voyages en Europe (accompagnateurs)
- Assemblée et conférence de district

- **Divers**

- Frais de fonctionnement
- Aide aux jeunes défavorisés (Outbound et/ou Inbound)

Argent



- Pécule mensuel du payé par Club hôte : +/- égal à 70€ (selon le niveau de vie) ou selon le pays et la devise
- Ouvrir un compte bancaire sur place (voir selon pays)
- Utiliser une carte de crédit standard ou rechargeable
- Voyage de fin d'année (entre 1.500 & 4.000 \$)
- Prendre un fond d'urgence (400 à 500 € ou \$ ou en monnaie locale)



Ouvrir un compte dans une banque

- Facilite les échanges d'argent avec la Belgique
- Facilite les paiements sur place
- Pour y déposer le fond d'urgence
- Pour y verser ou faire verser votre pécule mensuel

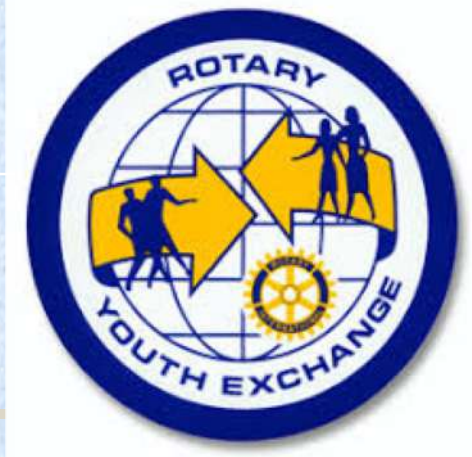


- **VISA & MASTERCARD** sont plus pratiques et le plus utilisés
- **MAESTRO** n'est quasi plus possible hors Europe
- **CARTE DE LA POSTE** semble pouvoir offrir la possibilité de retirer du cash partout dans le monde.

[Se renseigner](#)



District – 2160 Youth Exchange Program Assurances



- Assurance Santé Obligatoire

- **Précisée par le district hôte**
- Sinon, contacter Gene
- Non comprise dans le forfait
- Prix variable en fonction des pays/districts



- Assurances reconnues

- CISI Bolduc (USA) Plan B ou Plan B+ (+/- 1500 \$)

<https://www.culturalinsurance.com/rotary/cisibolduc.asp>

- Belgium YEP Insurance (+/- 450 €)

<https://form.jotform.com/220442242481042>

- Il existe également une assurance mexicaine reconnue
- Pour USA → CISI (exception Alaska, il y a une assurance spéciale)
- Australie → Assurance Australienne



Couverture Générale

- Frais d'hospitalisation
- Soins médicaux
- Soins dentaires
- Décès
- Rapatriement

Quelques exclusions

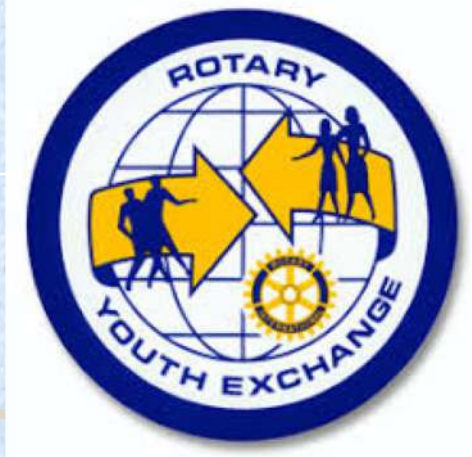
- Sports extrêmes et moteurs

Vérifiez les clauses du contrat d'assurance



District – 2160 Youth Exchange Program

Les problèmes sur place



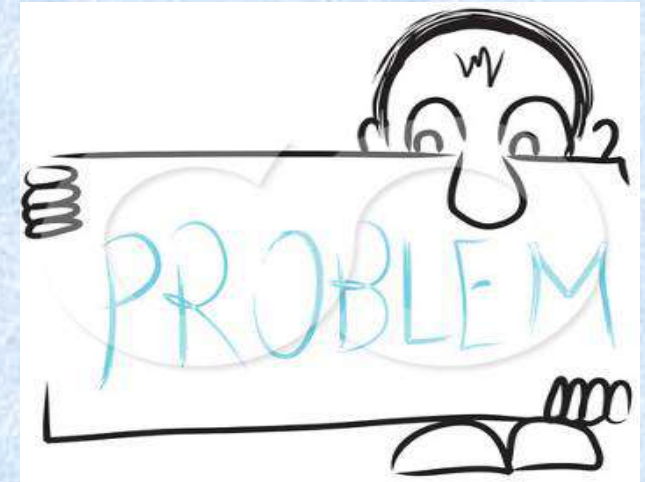
Conseils donnés aux Outbounds

En cas de problème en parler

- 1) Avec sa famille (sur place)
- 2) À son conseiller et/ou YEO (sur place)
- 3) À son Chairman (sur place)
- 4) Si le problème n'est toujours pas réglé :

Le chairman belge/coordonateur de zone sont alors les personnes de contact

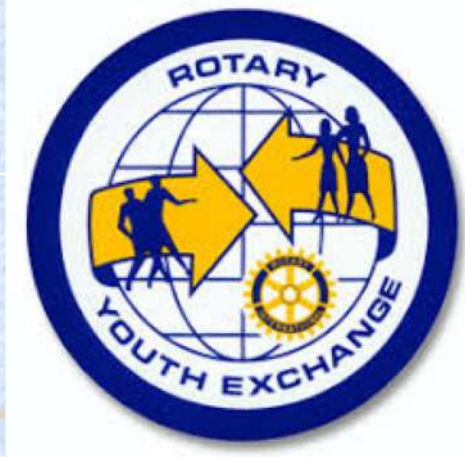
- **C'est au jeune de nous contacter**
- **Pas d'action, si les parents nous contactent**





District – 2160 Youth Exchange Program

Visa et Vols





Contact pour les Visas

Jean-Christophe Michel

E-mail : jcmichel@hotmail.be

Tel : 0475 41 69 46

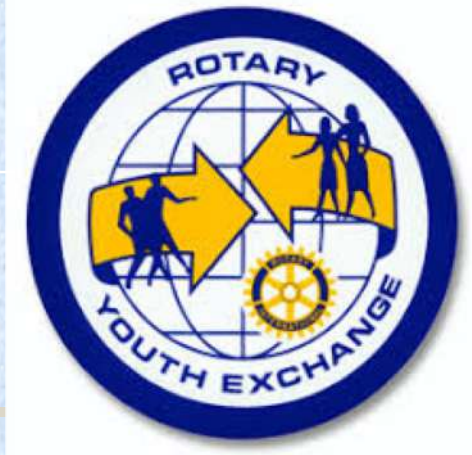


- **VISA**
 - Faire les démarches nécessaires et en temps utile
- **Vol**
 - Contacter la famille d'accueil → date d'arrivée
 - Choisir l'aéroport le plus proche
 - Billet avec dates modifiables
 - Ne pas réserver un vol promo



District 2160 – Youth Exchange Program

Départ





- **Documents**

- Avoir reçu les documents du Rotary 'Guarantee Form'
- Assurances avec numéro de téléphone d'urgence et numéro de contrat

- **Valise**

- Inutile de partir avec 3 valises
- Eviter de prendre trop de vêtements ou non adaptés au pays d'accueil

Départ – Quelques conseils



- Faire de badges ou des pins (+/- 200)
- Prendre des petits cadeaux pour les familles d'accueil
- Acheter une carte GSM sur place
- Dire au revoir sa famille, son chien, à ses amis

Départ



**Le programme d'échange n'est pas une année dans
une vie mais une vie dans une année**





District – 2160 Youth Exchange Program

MERCI DE VOTRE ATTENTION

District 2160 – YEP

Le Comité.

